



Ergonomic Advantage Line

GENERAL 3 SECTION EA ULTRASOUND TABLE

Our new **EA Line** of tables incorporates all of the ergonomic features and comfort our tables have had for years with new powered features that speed up exam times and make positioning patients easier.



Shown in Pewter fabric

Inspired by the leading ergonomic experts in sonography



- Decrease sonographer injury
- Features minimize exam times

Features

- Designed for use as exam chair or table with many options to customize the table to fit your needs
- Designed by leading Ergonomic Specialists and exceeds the “Industry Standards for Sonography”
- Sleek base design promotes unobstructed compatibility with ultrasound equipment ensuring better ergonomic conditions for the sonographer

Visit
www.oakworksmed.com
for a quote!

GENERAL 3 SECTION EA



New Graphic interface makes it easy to control all the powered functions.



GENERAL 3SECTION TABLE EA

#84783-T* 26" W #83892-T* 30" W

FEATURES	
3 Section Top	26" (66cm) or 30" (76cm) wide x 72" (183cm) long
Backrest	34" (86cm) long
Seat	26" (66cm) long
Leg Rest	19" (48cm) wide x 11" (28cm) long
Motion 1	Electric Height Range 19" - 33" (48-84cm)
Motion 2	Electric Trendelenburg/Reverse Tilt $\pm 18^\circ$
Motion 3	Electric Fowler Backrest 0-75°
Motion 4	Electric Leg Rest 0-90°
Controls	Multi-function hand control
Weight Capacity	550 lb (250kg)
Product Weight	359 lb (163kg)
Padding	3" (8cm) Comfort Foam™
Fabric	Premium, PVC free TerraTouch™
Included Features	4" (10cm) locking casters, Paper roll holder
Warranty	3 years parts, 2 years labor
Safety Listings	FDA listed, CE marked, cETLus listed, CB Certificate

OPTIONS must be ordered with table.	
Foot Control	Height, Trendelenburg, Fowler
Powered Central Base Locking	Lock and unlock using hand control
Procedure Tray	12.25" (6cm) x 10.25" (26cm) and holds 2 quarts (1.9 liters)
Retractable footrests	Stirrups
Side Rails (set of 2)	25.5" (65cm) long x 6" (15cm) tall (from surface of table)
Battery Backup	Capable of running during power failure
Non-USA Electric System	Please contact us for order details

ACCESSORIES order any time.		#
Detachable Arm Board	Use with T-rail adapter 5" (13cm) wide x 20.5" (52cm) long	84943
QuickLock™ Head Rest (black) & AeroCel Pad	Comfortable, adjustable prone or supine support	PKG7554*
Table Extender	24" (61cm) wide x 12" (30cm) long	63487
T-rail Adapter 8" (20cm) long	Attaches to the backrest for use with USA format T-rail attachable accessories.	83139

*Fabric color code must be specified.

ERGONOMIC ADVANTAGE LINE

FEATURES & OPTIONS

POWERED LEG REST

Powered leg rest easily lifts patients legs and can be used with the stirrups extended.



BATTERY BACK UP (OPTION)

A battery back up system capable of running for several hours if the power fails.



HAND CONTROL

New graphic interface hand control with presets allows you to quickly position the patient by controlling multiple functions at once.



REPLACEABLE PADS

Our new design features easily replaced pads, helping to increase the functional life of the tables at a lower cost.



TWIN TOWER BASE AND CASTERS

Twin tower design creates a very rigid and strong support system with a 550lb weight capacity.



POWERED BACKREST

The new electronics with graphic interface hand control allow you to easily and quickly change the position of the backrest.



SIDE RAILS (OPTION)

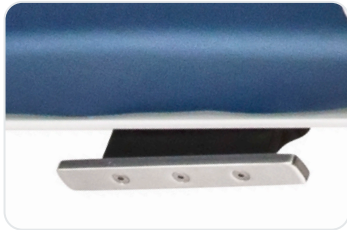
Our new design recesses farther under the top when not in use, improving ergonomics beyond our previous model.



EA LINE OPTIONS & ACCESSORIES

T-RAIL ADAPTER (ACCESSORY)

Multiple locations allow you to choose the best spot for this easily installed & removed accessory capable of handling up to 150 lb (68kg). Can be used with any American standard accessory. 8" (20cm) L



POWERED CENTRAL BASE LOCKING (OPTION)

The new system allows you to easily lock or unlock the base by simply pushing a button on the hand control.



QUICKLOCK™ HEAD REST & AERO ·CEL PAD (ACCESSORY)

The platform allows precise cervical flexion and height positioning over a wide range for both prone and supine treatments.



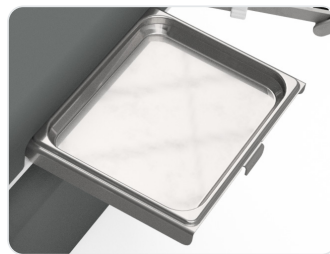
TABLE EXTENDER (ACCESSORY)

Lengthens the table by 12" (31cm) to 84" (213cm) allowing for access to the patient's neck for carotid artery exams and thyroid exams. 24" (61cm) W x 12" (31cm) L



PROCEDURE TRAY (OPTION)

Retractable and removable, the stainless Steel procedure tray has a 2 quart capacity.



STIRRUPS (OPTION)

Easily adjusted stirrups that store under the top can be combined with our optional, retractable, removable procedure tray.



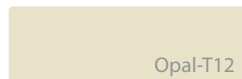
TERRATOUGH™ FABRIC



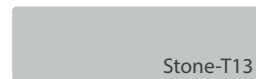
Coal-T01



Heron-T05



Opal-T12



Stone-T13



Sapphire-T17



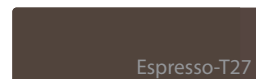
Clay-T18



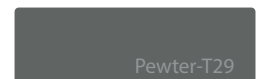
Ocean-T20



White-T26



Espresso-T27



Pewter-T29

We strive to ensure that the colors displayed on our product imagery (online and in print) are as accurate as possible. However, due to the limitations of printers, scanners, computer monitors, and other equipment, the colors may not be accurate.

717.759.3146 www.oakworksmed.com email: medsales@oakworks.com