

CFPMB301 Bariatric Imaging Table

Oakworks Imaging Tables have a large height range helping to create safe patient transfers while allowing doctors to stand comfortably. Our large lifting column is very rigid, ensuring rock solid support for fast imaging and procedures.



750 lbs. Patient Weight Capacity
Rectangular top 24" x 80"

Motions

- Motion 1 - Height Range 26" - 44"
- Motion 2 - Trendelenburg Tilt +15/-11°
- Motion 3 - Longitudinal Travel 10"

Features

- Large 24" wide x 80' long carbon fiber top with 52.5" metal free imaging space and a wide range of motions
- 2" Radiolucent Comfort Foam[®] table top pad
- Warranty is 4 years parts and 3 years labor

SPECIFICATIONS

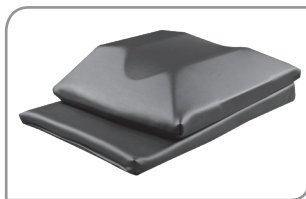
- 750 lb Patient Weight Capacity
- Large Adjustable Height Range 26" - 44"
- 52.5" Metal Free Imaging Space
- Cost Effective 3 Movement Table
- Warranty: 4 years parts, 3 years labor

CFPMB301 #81812 Rectangular

| INCLUDED FEATURES | |
|--|---|
| Carbon Fiber Top 52.5" (133cm) Metal free imaging space | Rectangular 24" (61cm) wide x 80" (203cm) long |
| Motion 1 | Electric Height Range 26" - 44" (66cm-111cm) (5" casters w/o 2" pad) |
| Motion 2 | Electric Trendelenburg tilt +15°/-11° |
| Motion 3 | Electric Longitudinal travel 10" (25cm) |
| Controls | Multi-function hand control |
| Weight Capacity | 750 lb (340kg) |
| Product Weight | 475 lb (216kg) |
| Included Features | 2" (5cm) Radiolucent Comfort Foam™ table top pad, 5" (13cm) locking casters, patient restraint straps (2) |
| Warranty | 4 years parts, 3 years labor |
| Safety Listings | FDA listed, CE marked, cETLus listed, CB Certificate |

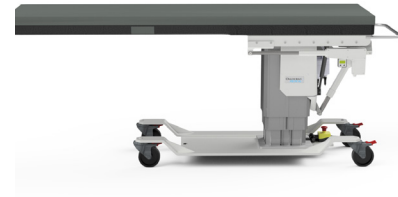
| OPTIONS <i>must be ordered with table.</i> | |
|--|----------------|
| Foot Control (CFPMB301) | All functions |
| Non-USA electrical systems | Please inquire |

| ACCESSORIES <i>order any time.</i> | | # |
|-------------------------------------|-------------------------------------|-------|
| Carbon Fiber Arm Board (6" wide) | 180° Articulation | 83575 |
| Fluoro Extender | Polycarbonate | 33975 |
| Interventional Supine Pillow System | Contoured pad and support wedge pad | 81821 |
| Spine Positioning System II | 8 piece system | 81819 |
| T-rail Clamp | 6" (15cm) long rail | 71679 |



INTERVENTIONAL SUPINE PILLOW SYSTEM

Primarily designed to facilitate cervical transforaminal injections, but useful for other antero-lateral procedures such as facet injections, medial branch blocks, stellate ganglion blocks, scalene injections, brachial plexus blocks and discography.



ACCESSORIES

SPINE POSITIONING SYSTEM II

Radiolucency & adjustability for ideal cervical, thoracic & lumbar visualization. Minimize unwanted movement & reduce procedure time.



SINGLE CARBON FIBER ARM BOARD

Fully radiolucent with a 180° range of motion, the arm board requires no mounting or attachment hardware and simply slides under the table top pad. It can be used on any fluoroscopy table & will support arms and feet in a variety of positioning configurations.



FLURO EXTENDER

Made of radiolucent, polycarbonate material, it's organic shape is conducive to a variety of table placement applications. 30" long x 23.5" wide x 1/4" thick



6" ADJUSTABLE T-RAIL CLAMP

The adjustable T-rail clamp can be positioned along the grooved table top edge. Clamp is also removable.



717.759.3146 www.oakworksmid.com email: medsales@oakworks.com