

THE ALL NEW

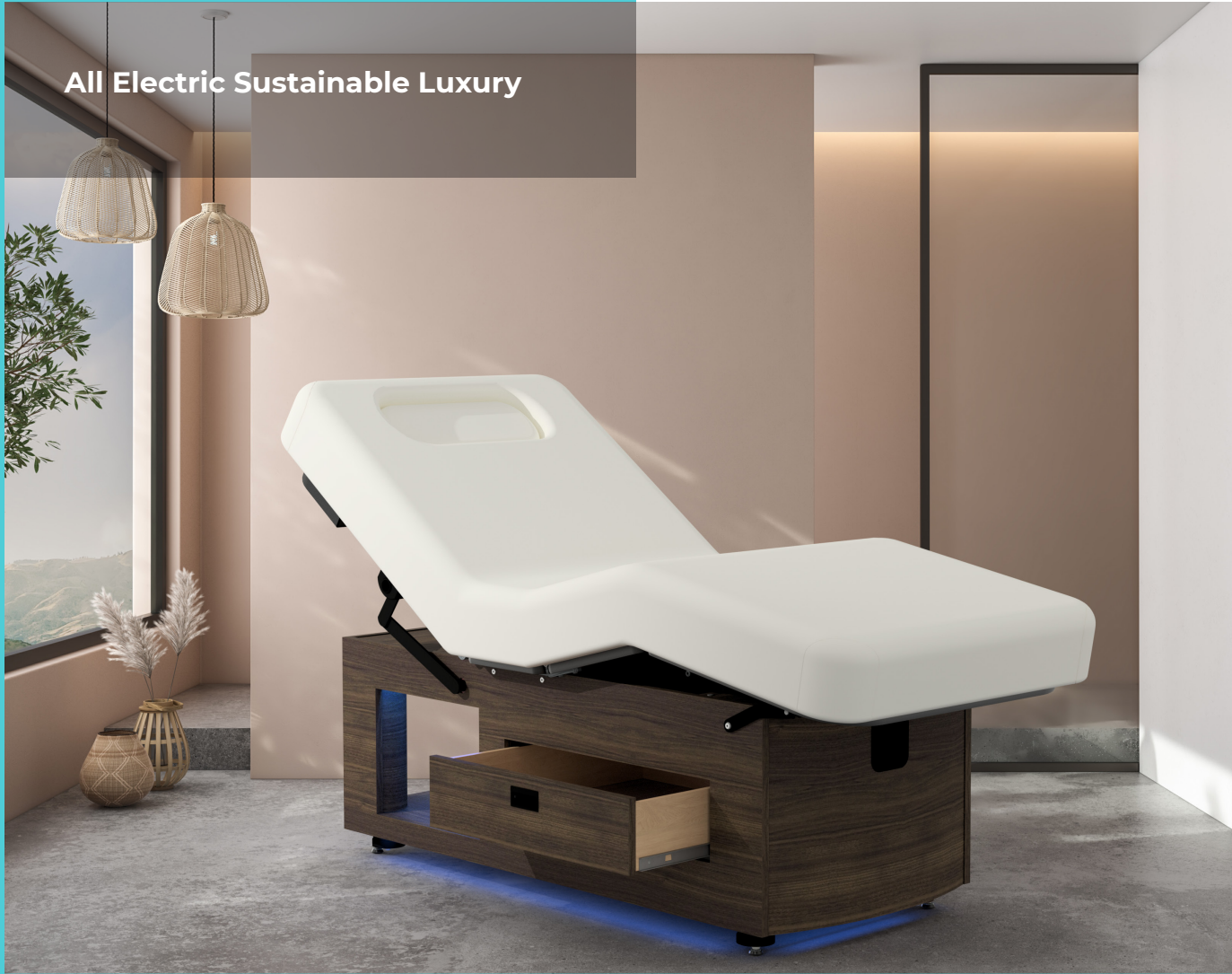
PREMA

e-nvi



OAKWORKS®

All Electric Sustainable Luxury



Quiet, quick and seamless with no maintenance



PREMA

e-nvi

electric. **e-nvi**ronmentally conscious design.

Spa
Wellness
Residential



Newest eco-conscious materials and innovation

- 🌿 New, clean & sustainably sourced woods, laminates, lacquers and fabrics with replaceable tops
- 🌿 Made in USA in an ISO Certified medical grade factory with zero carbon footprint
- 🌿 Domestic shipping for low transportation emissions
- 🌿 New lighter weight innovative materials = lower freight costs



Specially designed for a unique whole body treatment and wellness experience

Designed for inclusive spa spaces

- Low Height as low as 22.5" with a 500 lb. weight rating
- Breast/body comfort for all shapes and sizes
- Certified ETL listed UL 962 safety standard with low electromagnetic radiation
- Best in class Massage Therapist and Esthetician Ergonomics

Four unique cabinet designs, 3 top options

From the four cabinet designs to the LED lights, this table has everything you need to create an experience that's personalized for every customer.



Sliding doors cabinet shown in cosmic strandz with white top



Storage drawer cabinet shown in walnut with opal top



Warming drawer cabinet shown in natural with sage top



Open shelf shown in natural recon with opal top

Fully electric designs with minimal electromagnetic fields to create a healing e-nvironment!



LED Lighting

Accent lighting allows you to create an ambience to enhance your client's experience

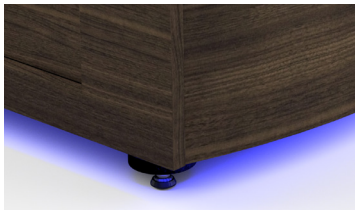
Display Shelf

Its modern design is the perfect accent for any room. A place that blends the aesthetics of your brand.



Contoured Design

Curved panel design and high-quality construction, a perfect addition to your spa



Our Commitment to Sustainability



Since its inception over 40 years ago, Oakworks has maintained a strong commitment to e-nvironmental wellness and making products in the US. Our business model relies heavily on ensuring sustainable

resources – both natural and workforce-related. We have a proactive plan that addresses sustainability to ensure we are doing our part to preserve the health of our planet and the wellbeing of our employees.

GREEN



MANUFACTURING

see page 4 for colors and finishes

Table Specifications

Lift System	Electric
Top	Electric Salon, Electric Backrest, Flat Top
Controls	Hand Control with Memory Foot Control
Weight Capacity	500 lbs. (226.8 kg)
Table Weight	190 lbs. (86.2 kg)
Fabric	TerraTouch Medical grade ISO 10993
Finishes	Wood finish or laminate
Padding	Removable 4" (10.2 cm) or 6" (15.24 cm)
Height Range with 4" (10.2 cm) Padding	22.5" - 32.5" (57.15 cm - 82.55 cm)
Width	29" (73.66 cm), 31" (78.74 cm), 33" (83.8 cm)
Length	73" (185.42 cm)
Hot Towel Cabi Ready	Fits Taiji 6
LED Lighting System	Standard
Non-USA Electric System	Please contact us for details
Regulatory	ETL Listed UL 962 table

Product is not a medical device and is not listed with the FDA

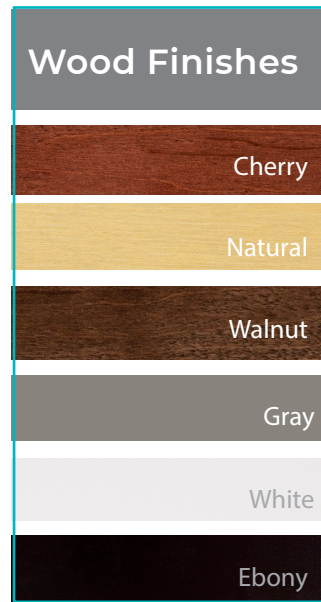
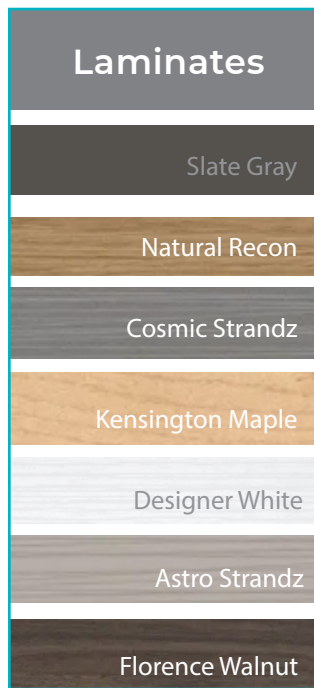
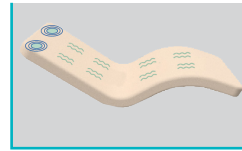


Table Options



Patented **ABC system** (Adjustable Body Comfort) provides the ultimate spa experience. (Optional)



SoVi vibroacoustic system is designed to deliver all the latest forms of healing modalities via a very flexible integrated delivery system. (Optional)



Warming drawer model uses convection technology for fast and even heating.



The cabinet model fits up to 2 Taiji 6 cabi's. (Accessory)



The **Fuzion heating system** is embedded in the foam, creating a more even heat. (Optional)

oakworksm.com
717-759-3146
medsales@oakworksm.com

© 2023 OAKWORKS®, Inc. 923 East Wellspring Rd. New Freedom, PA 17349 USA



FMS84901

